

## I6615008 CAPRI II

Superbe velours non feu à l'effet frappé, CAPRI II est décliné dans une très belle gamme de couleurs chaleureuses.

### I6615008 - Avana



Laize : 141,00 cm / 55,51 inch

### Fadini Borghi

<b>TYPE</b>	-
<b>UTILISATION</b>	Siège intensif
<b>MARTINDALE</b>	>100.000 T
<b>COMPOSITION</b>	100 % Polyester Trevira CS
<b>UNITÉ DE VENTE</b>	Disponible au mètre
<b>LAIZE</b>	141 cm / 55,51 inch
<b>POIDS</b>	634 gr / ml
<b>ENTRETIEN</b>	

<b>CERTIFICATIONS</b>	NFPA 701-Pass BS5852 Cigarette & match test CAL TB 117- Pass BS5867 Curtain Non feu M1 EN1021-1-2 CLASSE UNO NFPA 260-Class 1 CRIB 5
-----------------------	--

<b>NOTES</b>	Non feu Embossed fabrics
--------------	-----------------------------

<b>LIASSE</b>	I9979202001MINI I9979202001
---------------	--------------------------------

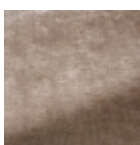
## 26 Couleurs



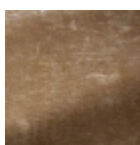
16615001  
Neve



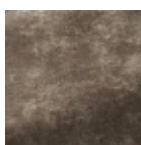
16615002  
Perla



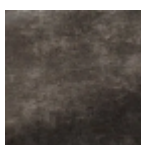
16615003  
Tortora



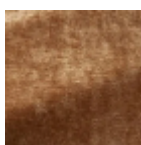
16615004  
Pepe



16615005  
Delfino



16615006  
Tempesta



16615007  
Cappuccino



16615008  
Avana



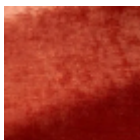
16615009  
Senape



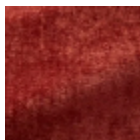
16615010  
Pesca



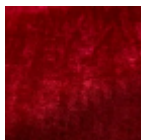
16615011  
Rosa



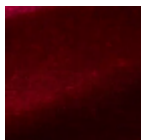
16615012  
Albicocca



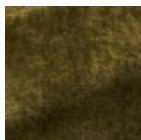
16615013  
Granata



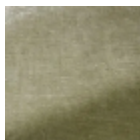
16615014  
Ciliegia



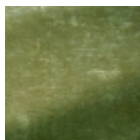
16615015  
Lampone



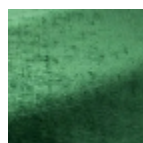
16615016  
Felce



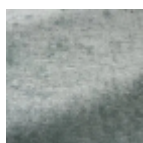
16615017  
Giada



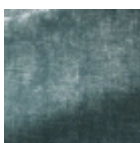
16615018  
Oliva



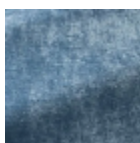
16615019  
Smeraldo



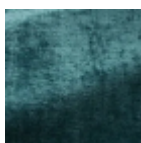
16615020  
Celadon



16615021  
Fontana



16615022  
Nattier



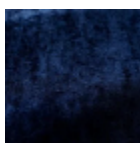
16615023  
Anatra



16615024  
Zaffiro



16615025  
Marinaio



16615026  
Indaco