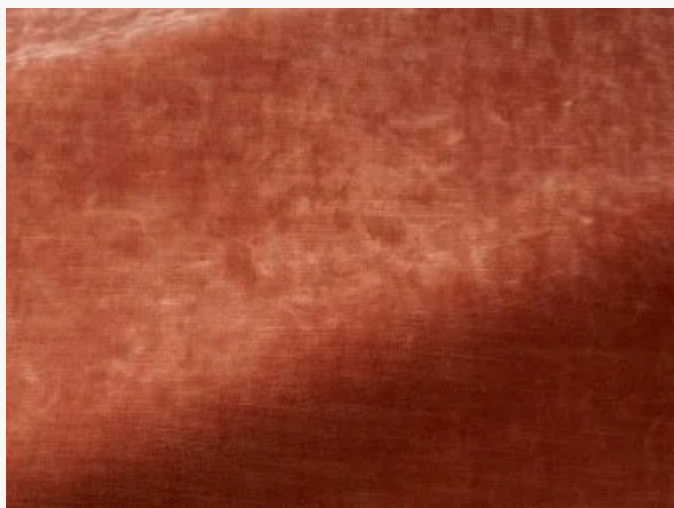


## I6615010 CAPRI II

Superbe velours non feu à l'effet frappé, CAPRI II est décliné dans une très belle gamme de couleurs chaleureuses.

### I6615010 - Pesca



Laize : 141,00 cm / 55,51 inch

### Fadini Borghi

<b>TYPE</b>	-
<b>UTILISATION</b>	Siège intensif
<b>MARTINDALE</b>	>100.000 T
<b>COMPOSITION</b>	100 % Polyester Trevira CS
<b>UNITÉ DE VENTE</b>	Disponible au mètre
<b>LAIZE</b>	141 cm / 55,51 inch
<b>POIDS</b>	634 gr / ml
<b>ENTRETIEN</b>	

<b>CERTIFICATIONS</b>	NFPA 701-Pass BS5852 Cigarette & match test CAL TB 117- Pass BS5867 Curtain Non feu M1 EN1021-1-2 CLASSE UNO NFPA 260-Class 1 CRIB 5
-----------------------	--

<b>NOTES</b>	Non feu Embossed fabrics
--------------	-----------------------------

<b>LIASSE</b>	I9979202001MINI I9979202001
---------------	--------------------------------

## 26 Couleurs



16615001  
Neve



16615002  
Perla



16615003  
Tortora



16615004  
Pepe



16615005  
Delfino



16615006  
Tempesta



16615007  
Cappuccino



16615008  
Avana



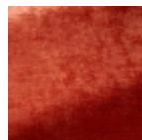
16615009  
Senape



16615010  
Pesca



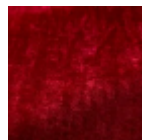
16615011  
Rosa



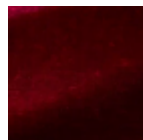
16615012  
Albicocca



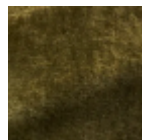
16615013  
Granata



16615014  
Ciliegia



16615015  
Lampone



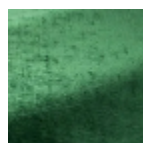
16615016  
Felce



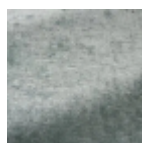
16615017  
Giada



16615018  
Oliva



16615019  
Smeraldo



16615020  
Celadon



16615021  
Fontana



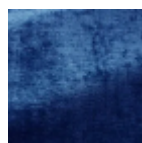
16615022  
Nattier



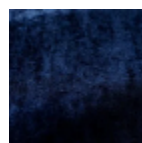
16615023  
Anatra



16615024  
Zaffiro



16615025  
Marinaio



16615026  
Indaco