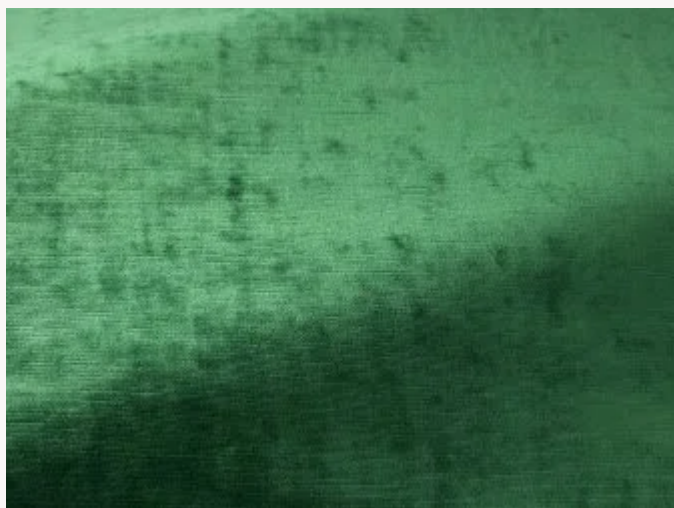


I6615019 CAPRI II

Superbe velours non feu à l'effet frappé, CAPRI II est décliné dans une très belle gamme de couleurs chaleureuses.

I6615019 - Smeraldo



Laize : 141,00 cm / 55,51 inch

Fadini Borghi

TYPE	-
UTILISATION	Siège intensif
MARTINDALE	>100.000 T
COMPOSITION	100 % Polyester Trevira CS
UNITÉ DE VENTE	Disponible au mètre
LAIZE	141 cm / 55,51 inch
POIDS	634 gr / ml
ENTRETIEN	

CERTIFICATIONS	NFPA 701-Pass BS5852 Cigarette & match test CAL TB 117- Pass BS5867 Curtain Non feu M1 EN1021-1-2 CLASSE UNO NFPA 260-Class 1 CRIB 5
-----------------------	--

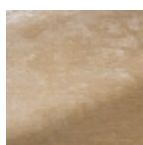
NOTES	Non feu Embossed fabrics
--------------	-----------------------------

LIASSE	I9979202001MINI I9979202001
---------------	--------------------------------

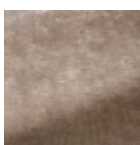
26 Couleurs



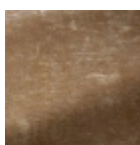
16615001
Neve



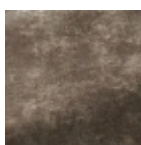
16615002
Perla



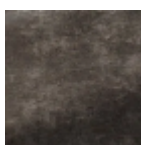
16615003
Tortora



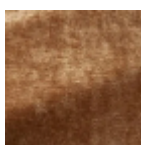
16615004
Pepe



16615005
Delfino



16615006
Tempesta



16615007
Cappuccino



16615008
Avana



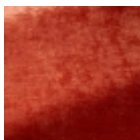
16615009
Senape



16615010
Pesca



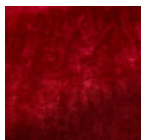
16615011
Rosa



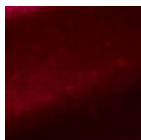
16615012
Albicocca



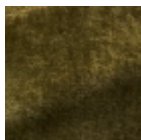
16615013
Granata



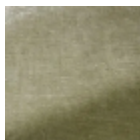
16615014
Ciliegia



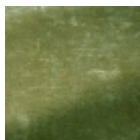
16615015
Lampone



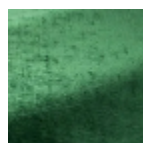
16615016
Felce



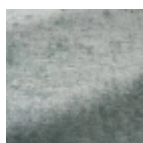
16615017
Giada



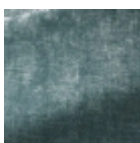
16615018
Oliva



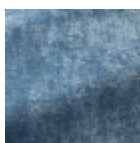
16615019
Smeraldo



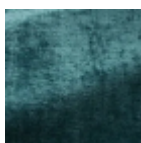
16615020
Celadon



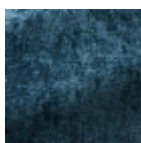
16615021
Fontana



16615022
Nattier



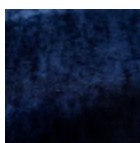
16615023
Anatra



16615024
Zaffiro



16615025
Marinaio



16615026
Indaco