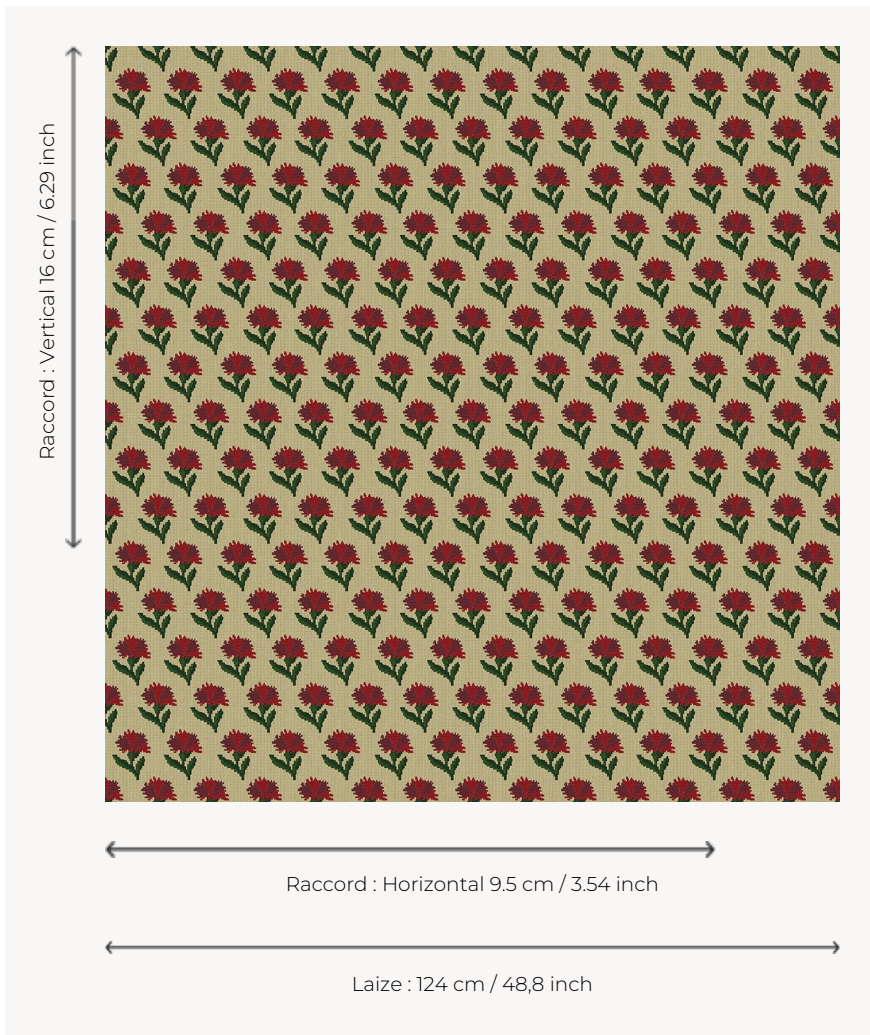


L4042_LES_OEILLETES_CANEVAS_B23_B22_B02_B13_FI LES

OEILLETES CANEVAS

Charmant semé d'œillets reproduisant les délicates broderies au petit point de l'époque Louis XVI.

L4042_LES_OEILLETES_Canevas_B23_B22_B02_B13_FI -



Le manach

TYPE	Toiles de Tours
STRUCTURE DU DESSIN	4 Couleurs, 1 Fond
FILS RECOMMANDÉS	Chenille Nacré Bouclette
UNITÉ DE VENTE	Disponible au mètre
LAIZE	124 cm env. / approx 48,80 inch
RACCORD	H: 9 cm env. - approx 3,54 inch V: 16 cm env. - approx 6,29 inch Raccord droit

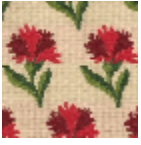
ENTRETIEN



NOTES

Tissé dans les ateliers Pierre Frey du nord de la France. Entreprise du Patrimoine Vivant.

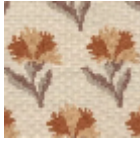
6 Couleurs



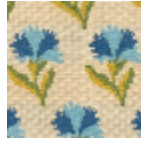
L4042_LES_OE
ILLETS_Caneva
s_B23_B22_B0
2_B13_FI



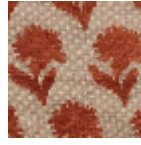
L4042_LES_OE
ILLETS_Caneva
s_B23_B22_B5
8_B57_FI



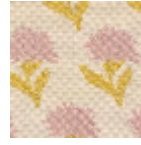
L4042_LES_OE
ILLETS_Caneva
s_B70_B94_B6
7_B57_FE



L4042_LES_OE
ILLETS_Caneva
s_B76_B23_B3
7_B21_FE



L4042_LES_OE
ILLETS_Caneva
s_C517_C517_C
517_C517_FM



L4042_LES_OE
ILLETS_Caneva
s_N3017_N3017
_N3022_N3022
_FE