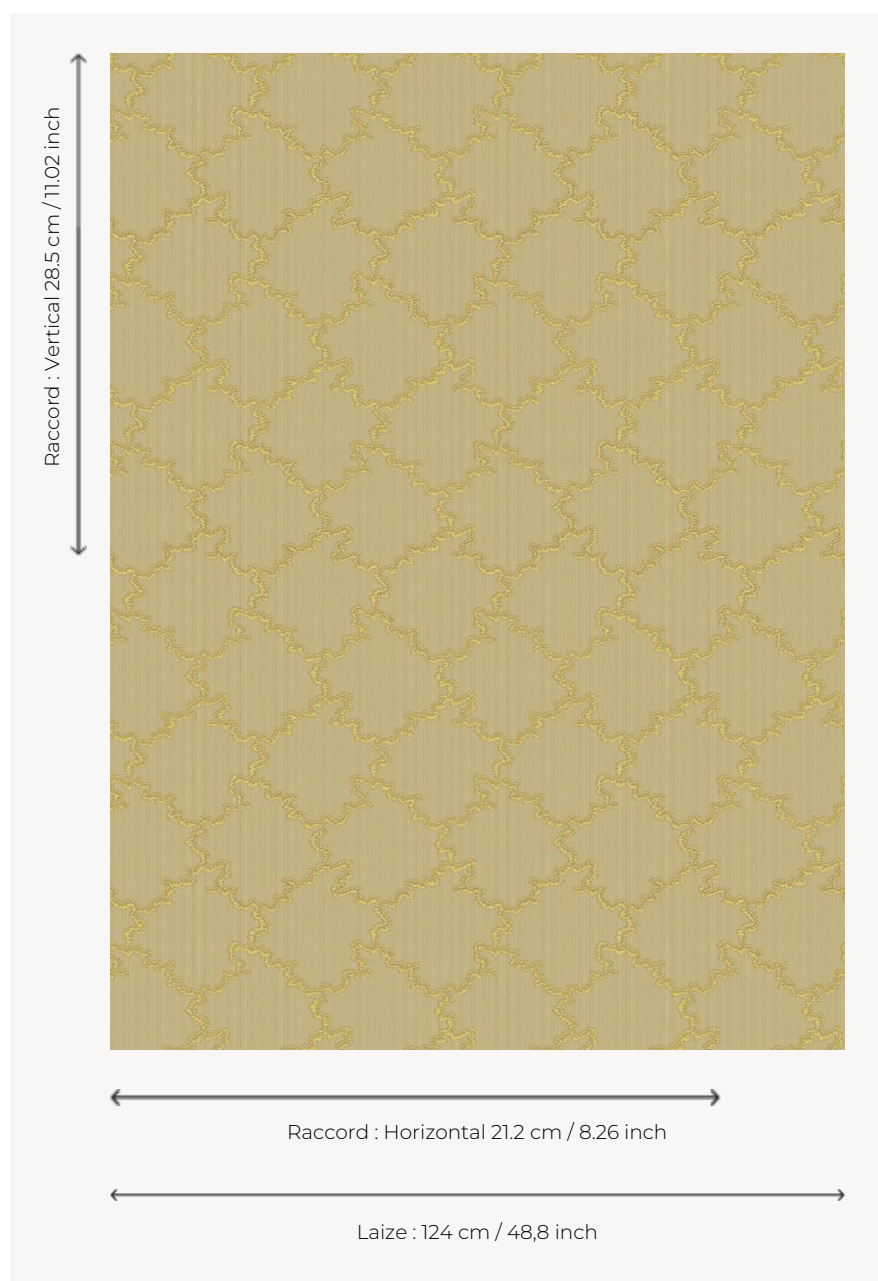


L4426_MONTESPAN_CANEVAS_N3104_FE_VERSO MONTESPAN CANEVAS

Le charme d'une composition rocaille de style Louis XV.

L4426_MONTESPAN_Canevas_N3104_FE_Verso -

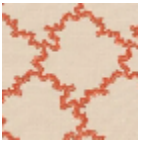


Le manach

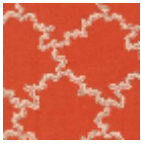
| | |
|----------------------------|--|
| TYPE | Toiles de Tours |
| STRUCTURE DU DESSIN | 1 Couleur, 1 Fond |
| FILS RECOMMANDÉS | Chenille Nacré Bouclette |
| OPTION CHINÉE | Oui |
| RÉVERSIBLE | Oui |
| UNITÉ DE VENTE | Disponible au mètre |
| LAIZE | 124 cm env. / approx 48,80 inch |
| RACCORD | H: 21 cm env. - approx 8,26 inch V: 28 cm env. - approx 11,02 inch Raccord droit |
| ENTRETIEN | |

NOTES Tissé dans les ateliers Pierre Frey du nord de la France. Entreprise du Patrimoine Vivant.

8 Couleurs



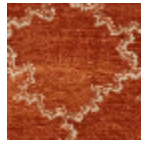
L4426_MONTE
SPAN_Canevas
_B92_FE



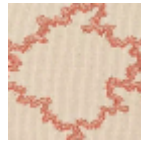
L4426_MONTE
SPAN_Canevas
_B92_FE_Verso



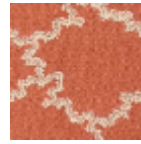
L4426_MONTE
SPAN_Canevas
_C517_FA



L4426_MONTE
SPAN_Canevas
_C517_FA_Vers
o



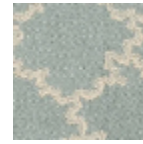
L4426_MONTE
SPAN_Canevas
_N3104_FE



L4426_MONTE
SPAN_Canevas
_N3104_FE_Ver
so



L4426_MONTE
SPAN_Canevas
_N3133_FE



L4426_MONTE
SPAN_Canevas
_N3133_FE_Ver
so