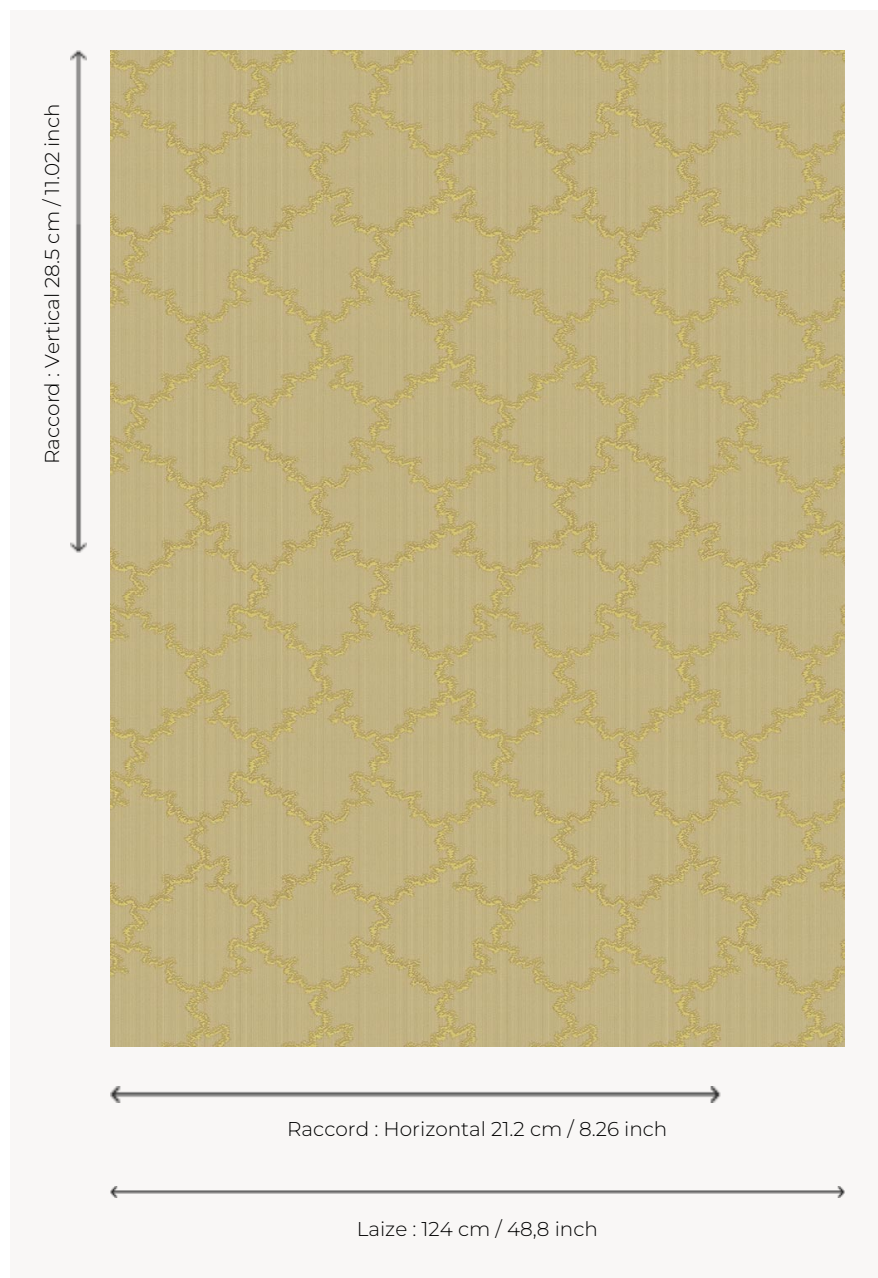


L4426_MONTESPAN_CANEVAS_N3133_FE_VERSO MONTESPAN CANEVAS

Le charme d'une composition rocaille de style Louis XV.

L4426_MONTESPAN_Canevas_N3133_FE_Verso -



Le manach

TYPE	Toiles de Tours
STRUCTURE DU DESSIN	1 Couleur, 1 Fond
FILS RECOMMANDÉS	Chenille Nacré Bouclette
OPTION CHINÉE	Oui
RÉVERSIBLE	Oui
UNITÉ DE VENTE	Disponible au mètre
LAIZE	124 cm env. / approx 48,80 inch
RACCORD	H: 21 cm env. - approx 8,26 inch V: 28 cm env. - approx 11,02 inch Raccord droit
ENTRETIEN	

NOTES Tissé dans les ateliers Pierre Frey du nord de la France. Entreprise du Patrimoine Vivant.

8 Couleurs



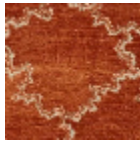
L4426_MONTE
SPAN_Canevas
_B92_FE



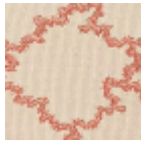
L4426_MONTE
SPAN_Canevas
_B92_FE_Verso



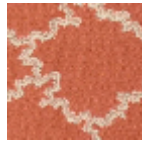
L4426_MONTE
SPAN_Canevas
_C517_FA



L4426_MONTE
SPAN_Canevas
_C517_FA_Vers
o



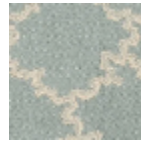
L4426_MONTE
SPAN_Canevas
_N3104_FE



L4426_MONTE
SPAN_Canevas
_N3104_FE_Ver
so



L4426_MONTE
SPAN_Canevas
_N3133_FE



L4426_MONTE
SPAN_Canevas
_N3133_FE_Ver
so