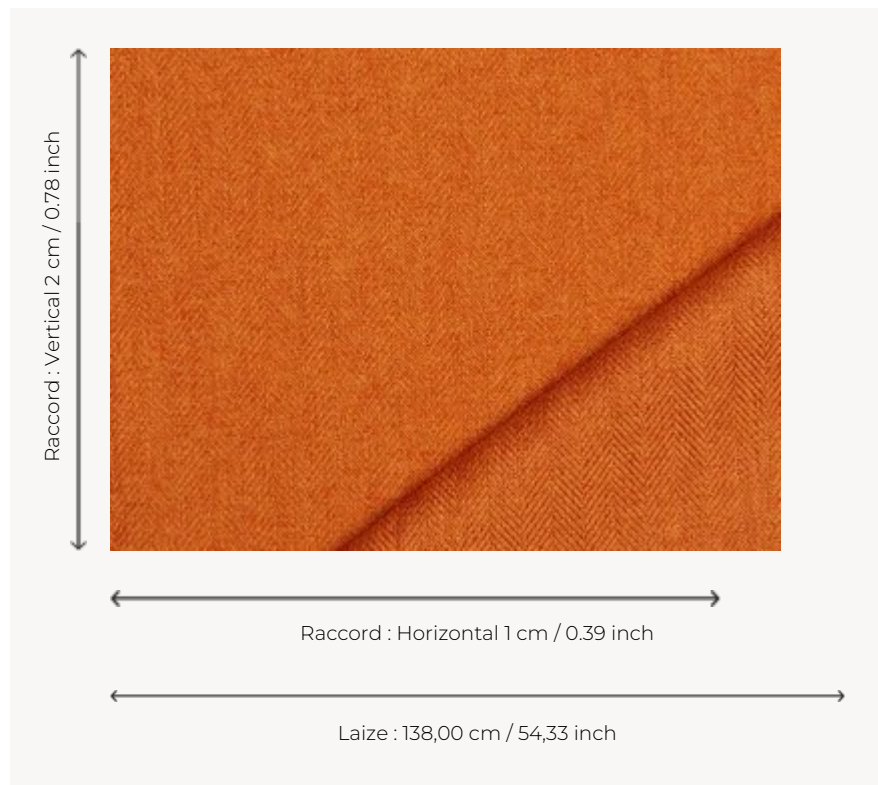


07939011 SHERLOCK

Séduisante étoffe réversible influencée par les tissus de costumes masculins, cet uni se décline dans une palette de couleurs qui va du classique au contemporain.

07939011 - Cource



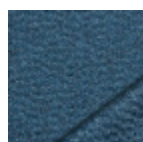
Boussac

PERFORMANCE	haute résistance
TYPE	-
UTILISATION	Siège intensif
MARTINDALE	60.000 T
COMPOSITION	100 % Polyester
UNITÉ DE VENTE	Disponible au mètre
LAIZE	138 cm / 54,33 inch
RACCORD	H: 1 cm - 0,39 inch V: 2 cm - 0,78 inch
POIDS	360 gr / ml
ENTRETIEN	

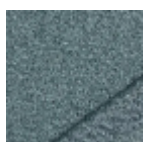
CERTIFICATIONS	<p>CRIB 5 en association avec une mousse difficilement inflammable NFPA 260-Class 1 EN1021-1-2 en association avec une mousse difficilement inflammable</p>
-----------------------	---

NOTES	<p>Reversible Embossed fabrics</p>
--------------	---

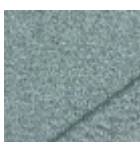
25 Couleurs



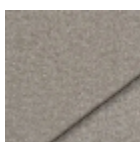
O7939001
Grand large



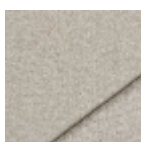
O7939002
Usine



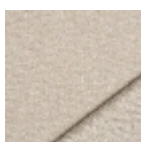
O7939003
Mistral



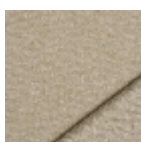
O7939004
Sel



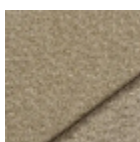
O7939005
Levure



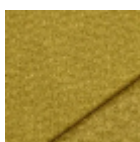
O7939006
Ficelle



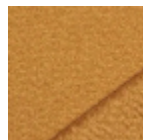
O7939007
Jute



O7939008
Acacia



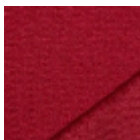
O7939009
Curry



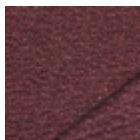
O7939010
Mangue



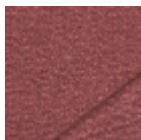
O7939011
Courge



O7939012
Matador



O7939013
Griotte



O7939014
Tomette



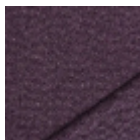
O7939015
Porcelaine



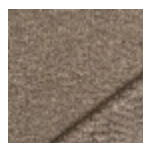
O7939016
Prunus



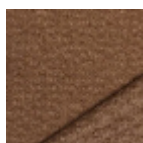
O7939017
Primevère



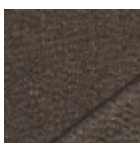
O7939018
Myrtille



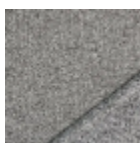
O7939019
Alpaga



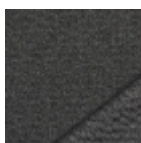
O7939020
Pécan



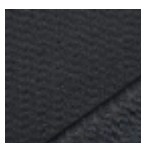
O7939021
Sous bois



O7939022
Métal



O7939023
Tableau



O7939024
Graphite



O7939025
Ciment